



Stainless steel doors and frames

General information

About the product

Steelcraft Stainless Steel Doors (LS Series) and Frames (FS, KS & MS Series) are engineered to meet the architectural requirements for stainless steel doors and frames in building applications requiring exceptional corrosion resistance and/or high design appearance.

This LS Series 1 3/4" door construction combine unique product features to withstand harsh environments while providing exceptional design.

To meet application requirements, the door is available in single and double door sizes, with optional visions, louvers, fire ratings and a wide range of hardware preparations.

Steelcraft Stainless steel doors and frames are Hurricane approved and models have been acoustically tested up to STC 51 (addition of vision light and/or doors swinging in pairs reduce the STC performance).

Installation

- Installation shall conform to the published Steelcraft installation instructions, ANSI A250.11-2012 (formerly SDI 105) *Recommended Erection Instructions for Steel Frames and NAAMM-HMMA 840-07.*

Specification compliance

1. Stainless steel astm a666 and astm a167; type 304 or type 316
2. NAAMM-HMMA 866-12 Guide Specifications for Stainless Steel Hollow Metal Doors and Frames
3. NAAMM-HMMA 860-92 Guide Specifications for Hollow Metal Doors and Frames

Installation shall conform to the published Steelcraft installation instructions, ANSI A250.11-2012 (formerly SDI 105) *Recommended Erection Instructions for Steel Frames and NAAMM-HMMA 840-07.*

Features and benefits

All Steelcraft's LS Series doors and FS, MS & KS Series frames are fabricated from 100% stainless steel both external and internal. Offered in two stainless steel alloys, 304 or 316, these Doors and frames provide excellent corrosion resistance, durability, performance, as well as a sleek aesthetic appearance.

Performance

Door: LS18 and LS16 Series:

1. **Door Cores** to suit various applications:
 - **Polystyrene, Honeycomb or Polyurethane**
 - **Steel Stiffened** available on quote basis
2. **Gauge:**
 - **18 gauge** and **16 gauge (standard)**
 - Heavier gauge available on a quote basis
3. **Vertical Edge Seams:** Seamless and Interlocking Edge.
4. **Beveled Hinge and Lock Edges**
5. **Component Parts and Hardware Reinforcements**
 - Made of 100% Stainless Steel

Frame: FS16, MS16, KS16 Series:

1. **Gauge:**
 - **16 gauge (standard)**
 - Heavier gauge available on a quote basis
2. **Component Parts, Reinforcements and Anchors:** all made of 100% Stainless Steel.
3. **Machine Mitered** corners factory welded and refinished to match face trim with no visible seam.
4. **Knock-Down (KD)** frame options available.
5. **Anchors:** masonry T, wire anchors, metal stud, existing wall anchors.

Ratings: actual tests conducted on stainless steel assemblies.

1. **Fire-rated** up to Class A (3 hour)
2. **Sound-rated** Door and Frame Assemblies up to STC 51
 - Seals not included
3. **Hurricane** approved (NOA Dade County Florida)

Durability

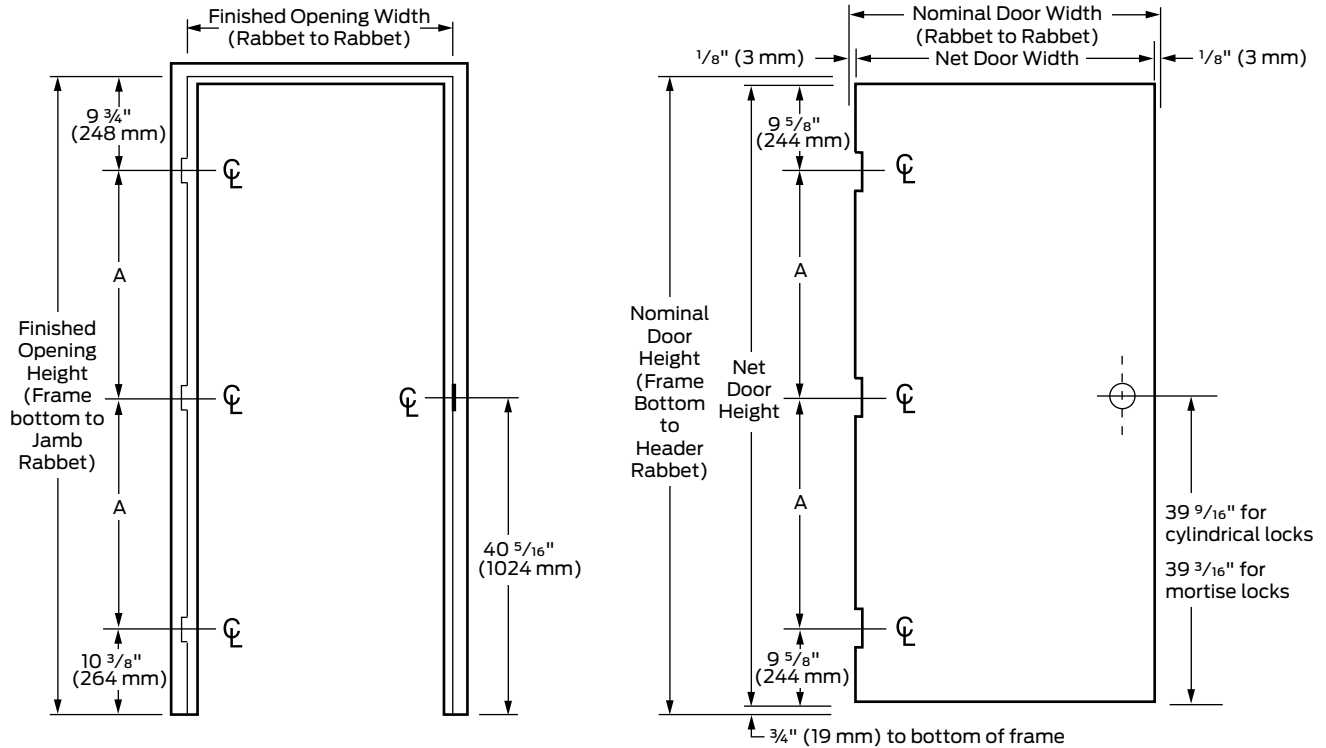
1. **Exceptional corrosion resistance:** conforming to ASTM A666:
 - **Type 304 Alloy:** typical corrosion resistance.
 - **Type 316 Alloy:** heavy duty corrosion resistance.

Fire ratings

Steelcraft Stainless Steel Series doors and frames meet the broadest fire rating requirements. They are listed for installations requiring compliance to both neutral pressure testing (ASTM E152 and UL -10B) and positive pressure standards (UL-10C).

Typical hardware locations

Doors and frames with 3 hinges (1 1/2 pair)

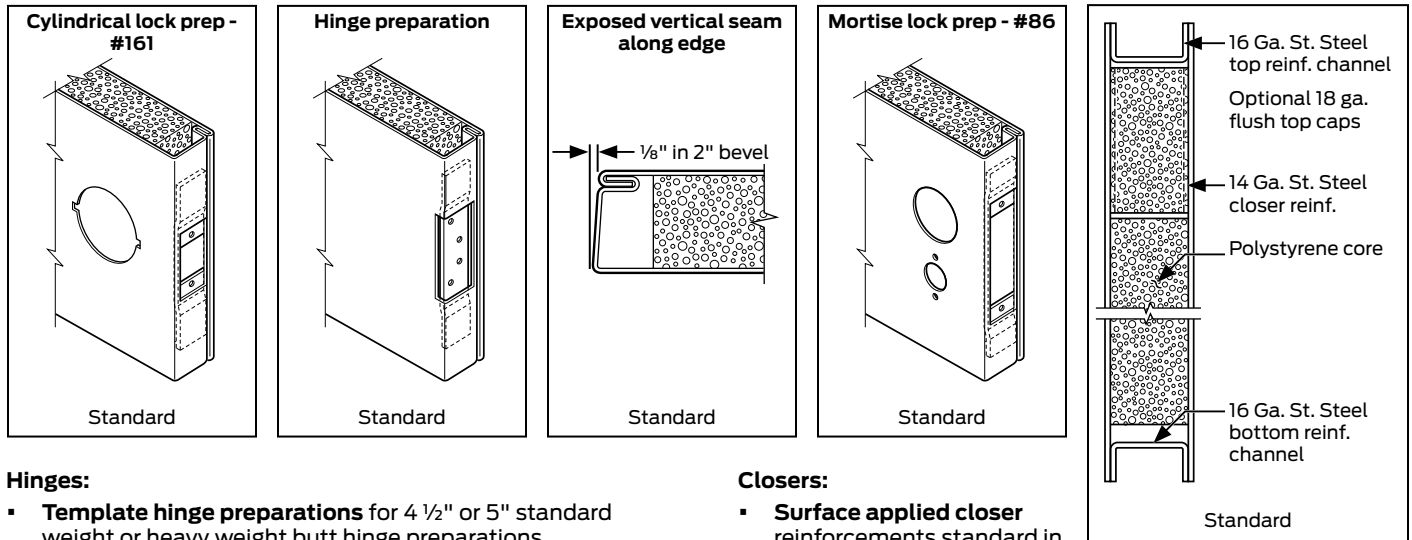


Standard door frame details

<p>Dust box</p> <p>Standard</p>	<p>Closer reinforcement</p> <p>Standard</p>	<p>Corner profile</p> <p>Standard-face welded</p>	<table border="1"> <thead> <tr> <th>Door opening height</th> <th>Dimension "A"</th> </tr> </thead> <tbody> <tr> <td>6' 8" (2032 mm)</td> <td>29 15/16" (760 mm)</td> </tr> <tr> <td>7' 0" (2134 mm)</td> <td>31 15/16" (811 mm)</td> </tr> <tr> <td>7' 2" (2184 mm)</td> <td>32 15/16" (837 mm)</td> </tr> <tr> <td>7' 6" (2286 mm)</td> <td>34 15/16" (887 mm)</td> </tr> </tbody> </table>	Door opening height	Dimension "A"	6' 8" (2032 mm)	29 15/16" (760 mm)	7' 0" (2134 mm)	31 15/16" (811 mm)	7' 2" (2184 mm)	32 15/16" (837 mm)	7' 6" (2286 mm)	34 15/16" (887 mm)
Door opening height	Dimension "A"												
6' 8" (2032 mm)	29 15/16" (760 mm)												
7' 0" (2134 mm)	31 15/16" (811 mm)												
7' 2" (2184 mm)	32 15/16" (837 mm)												
7' 6" (2286 mm)	34 15/16" (887 mm)												
<p>Hinge preparation</p> <p>Standard</p>	<p>4 7/8" Strike prep (ASA)</p> <p>Standard</p>	<p>Head detail</p> <p>2" Head standard</p>	<p>Jamb detail</p> <p>Standard</p>										

Standard hardware preparations

Typical hardware applications shown



Hinges:

- **Template hinge preparations** for 4 1/2" or 5" standard weight or heavy weight butt hinge preparations.
- Continuous hinge preparations are full mortise reinforced.

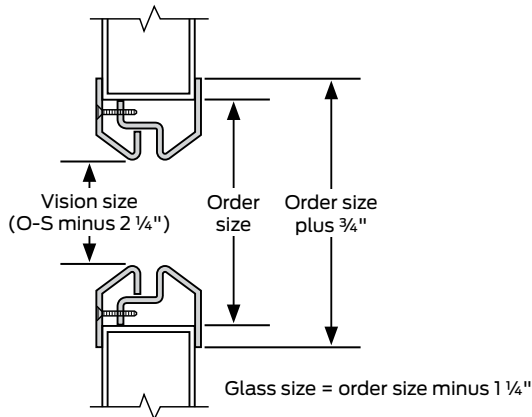
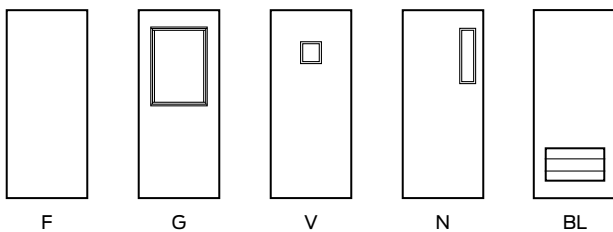
Locks:

- **Cylindrical** 161, 61 L and **Mortise** 86 lock preps are available for single door and active leaves.
- **Templated hardware preps**

Exit devices preps are available as follows:

- **Single/Active doors** = Rim or Mortise
- **Inactive leaves** = Surface Vertical Rods

Glass light options



Closers:

- **Surface applied closer** reinforcements standard in both doors and frames.
- **Concealed closer** preparations available as specified.

Strikes:

- **Strike** preparations will accommodate specified locking hardware.

Electric hardware:

- **Electric Hinge preparations** are available as specified.
- **Electric lock preparations with conduit** are available as specified.
- **EPT (Electric Power Transfer)** preps are available as specified.

Astragals:

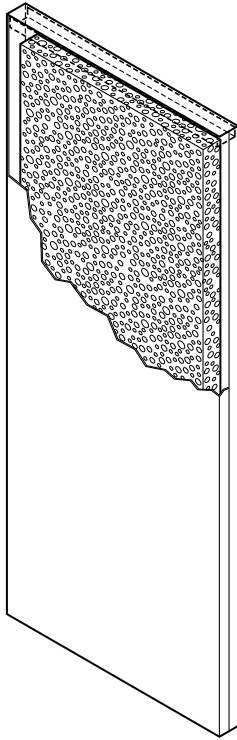
- **Surface mounted:** flat for active or inactive leaf

Notes:

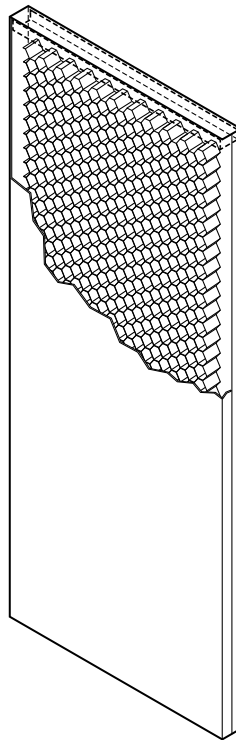
1. V-Light: Exposed glass size is true **10" x 10"** located at Steelcraft standard location.
2. N3, N4 and N5 light: Exposed glass size and locations at Steelcraft standard dimensions.
3. **NOT AVAILABLE WITH DEZIGNER® TRIM.**
4. Light kits are Anemostat LoPro design.
5. **Vision lites on pairs must match.**
6. Louvers can be installed upon request
7. Standard 1/4" glass, other available upon request.

Glass Option	Exposed Glass Size	Glass Cutting Size
V	10" x 10"	11" x 11"
N3	3" x 33"	4" x 34"
N4	4" x 25"	5" x 26"
N5	5" x 20"	6" x 21"

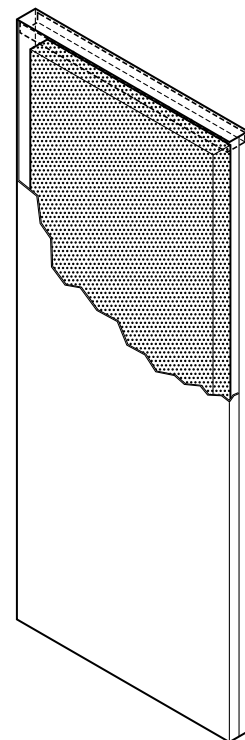
Sizes and performance



Polyurethane
 $\frac{U-0.10}{R-9.72}$



Honeycomb



Polystyrene
 $\frac{U-0.15}{R-6.73}$

General information

Steelcraft Stainless Steel doors and frames are designed to fit virtually all construction requirements for commercial and institutional building applications. Doors and Frames are shipped separately. All stainless steel product is packaged with protective pad and crated in heavy wood containers. Proper installation of Door and Frame Systems is critical to insure proper performance. It is imperative that materials are inspected thoroughly for shipping damage. If damage has occurred en route, please note it on the bill of lading and shipping documents.

Sizes and performance

All stainless steel doors and frames are manufactured and supplied to meet the dimensional standards and performance levels as published in ANSI A250.8- 2014 (SDI 100).

Custom options

Special size products are available to meet the unique construction, performance and aesthetic requirements of the architectural community. Contact Customer Care for these requirements at: 1-877-671-7011 (ask for estimating) or email Steelcraftestimating@allegion.com

On-site storage

Store doors under cover, in a dry area and in an upright position. All ferrous metal products should be stored where they will not be exposed to, or come in contact with water. This is particularly true of products such as doors, which have large flat surfaces on which water may collect if they are stacked horizontally. Do not use non-vented plastic or canvas. These materials create a humidity chamber, which promotes blistering and corrosion. Place no more than 5 doors in a group, with all material on planking or blocking at least 4 in. (100 mm) off the ground, 2 in. (50 mm) off a paved area or the floor slab. Provide a least ¼ in. (6.4 mm) space (wood strip).

Installation

Installation of all Steelcraft frames and doors shall conform to the published Steelcraft installation instructions, ANSI A250.11-2012 (formerly SDI 105) *Recommended Erection Instructions for Steel Frames and HMMA 840*. All Fire Rated doors must be installed and maintained in accordance with the National Fire Protection Association Pamphlet 80, and/or the local Authority Having Jurisdiction.